



Review of City of Gainesville Multi-Family Property Zero Waste Ordinances

City of Gainesville
Public Works, Solid Waste Division

Apartment Recycling Challenges

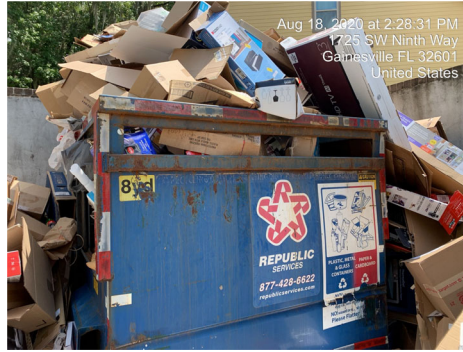
1. Poorly labeled containers
2. Different color/types of containers
3. Poorly maintained



May 18, 2020 at 12:40:47 PM
2701 NW 123rd Blvd
Gainesville, FL 32605
United States

Apartment Recycling Challenges

- 4. Overflowing containers
- 5. Contamination
- 6. Not enough service
- 7. Not enough locations



Apartment Recycling (Set up for Success)



Better Waste Management

Benefits to Your Apartment Complex

- Saves Money by Lowering Garbage Disposal Costs
- Provides an Added Amenity to Tenants
- Helps to Prevent Overflowing Garbage Dumpsters

Residents value communities with recycling programs and it's a good way to make your complex a place people enjoy living. A top complaint at UF Sustainability Office is quality of off-campus recycling.



Multi-Family Collection Frequency

- ▶ Multi-Family Properties (MFPs) are required to receive garbage collection service **no less than twice per week** (unless serviced by a compacting dumpster).
- ▶ MFPs must arrange for items such as furniture, appliances, construction & demolition debris or any material not considered a part of the customer's normal collection service to be **picked up within seven days of being placed for collection.**



Multi-Family Residential Property Reuse Plan

MFPs must submit a **Reuse Plan to divert usable and functioning household goods, furnishings, and electronics, and recyclable cardboard** resulting from the high volume move-in and move-out periods.

At a minimum, the Reuse Plan must contain:

1. Notice to tenants at least one month in advance of the move-out period with donation information.
2. Location of the donation collection site.
3. Weather protection plan.
4. Identify the local reuse organization that will accept donated goods.



***200 units or more effective 6/1/2023, and 50 units or more effective 1/1/2025**

Multi-Family Residential Property Reuse Plan

Organizations Interested in Participating in Reuse Plan Development



Multi-Family Residential Property Reuse Plan

Donation Stations



Recycling Program

MFPs must establish a recycling program that includes recycling of all designated recyclable materials.

Containers:

- ▶ Metal Cans (steel and aluminum)
- ▶ Glass Bottles & Jars
- ▶ Plastic Bottles, Jugs & Jars

Papers:

- ▶ Corrugated Cardboard
- ▶ Paperboard
- ▶ Newspaper, Magazines, Catalogs, Manuals, Paper Bags, Phone Books, & Paperback Books
- ▶ Office Paper (including shredded paper) & Junk Mail (unwanted mail)

YES ♻️



Empty Bottles & Cans

- ✓ Aluminum & Steel Cans
- ✓ Plastic Bottles
- ✓ Glass Bottles & Jars



Flattened Boxes & Papers

- ✓ Cardboard & Pasteboard Boxes
- ✓ Office Paper & Junk Mail
- ✓ Newspapers & Magazines

NO



- ✗ No Plastic Bags
- ✗ No Styrofoam
- ✗ No Food Contaminated Boxes
- ✗ No Aluminum Foil or Pans
- ✗ No Cups or Lids
- ✗ No Plastic Wrap

Recycling Service Level & Accessibility

- ▶ Recycling must be as convenient and accessible to residents as garbage collection at MFPs including valet service.
- ▶ MFPs must provide an adequate level of service and capacity of designated recyclable collection containers.



- ▶ MFPs must provide at least one indoor recycle storage container per unit. (effective 10/1/2023)

Recycling Education



- ▶ MFPs must post and maintain recycling educational signs in common areas where recyclables are collected.

- ▶ MFPs must distribute recycling information to all tenants at least once annually and to all new tenants on move-in.



Recycling Service Level & Accessibility

- ▶ The City recognizes each property may have unique challenges.
- ▶ The City recognizes recycling contamination issues.
- ▶ Recycle dumpsters might be better than carts at some locations.



Food Waste

Effective 6/1/2024

- ▶ **All commercially-collected residential serviced property owners/developers and their affiliated entities, including but not limited to landlords, management companies, condominium associations, and homeowner associations shall establish a food waste collection program that:**
 - a) Includes collection and diversion of food waste from the waste stream;
 - b) Provides an industry-standard food waste container in a common area on the property that is as convenient and accessible to the residents as garbage and recovered materials collection containers;
 - c) Provides an adequate level of service and capacity of food waste collection containers based on the number of residents, units, or generation at the property;
 - d) Prominently posts and maintains one or more signs in common areas where food waste is collected that specify the materials accepted as food waste;
 - e) Distributes food waste collection information to all tenants at least once annually and to all new tenants on move-in; and
 - f) Provides at least one indoor food waste storage container per unit.



Contact Info

- ▶ waste@gainesvillefl.gov
- ▶ 352-334-2330
- ▶ www.gainesvillefl.gov/ZeroWaste

Mike Heimbach, Sustainability Manager
Tom Strickland, Recycling Coordinator
Mike Barnes, Inspection Supervisor
Keith Hampson, Recovery Program Coordinator
Matt Buszko, Zero Waste Specialist

