

Benefits of Recycling

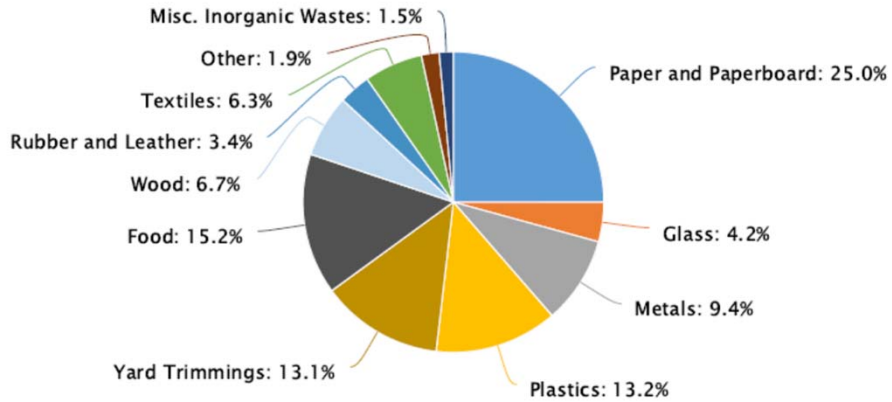
- Sustainable Use of Resources (conservation of renewable and nonrenewable resources)
- Mitigate Climate Change (reduces greenhouse gas emissions)
- Healthier Lives for Humans and other species (reduces air and groundwater pollution)
- Saves Energy (conservation of resources and lowers greenhouse gas emissions)
- Healthier Soils & Reduces Need for Landfills (composting and fewer landfills)
- Stronger Economy (innovation and creates jobs)



What's in our trash?

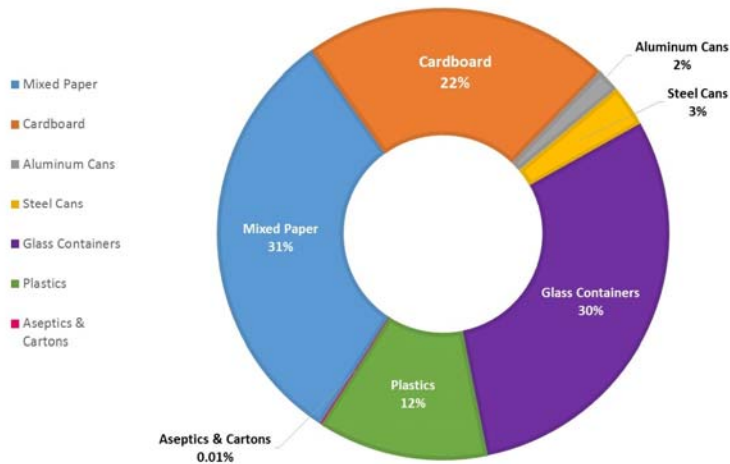
Total MSW Generated by Material, 2017

267.8 million tons

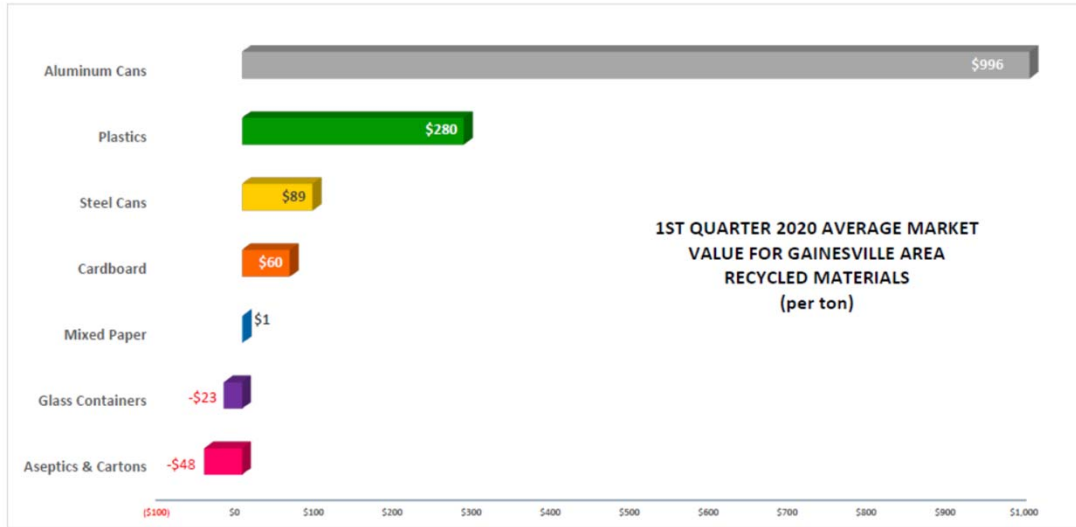


What's in our recycling?

2019 CITY OF GAINESVILLE RESIDENTIAL CURBSIDE RECYCLABLE MATERIAL COLLECTED (BY WEIGHT)



What's our recycling worth?



City of Gainesville Residential Recycling Program

2019 Solid Waste Numbers for City of Gainesville

Tons of Garbage Collected:	20,016 tons	
Ton of Recycling Collected:	4,758 tons	
Residential Recycling Rate:	23.7%	(National ~25%)
Residential Diversion Rate: (includes yard waste, appliances and electronics)	39.9%	(National ~35%)
Commercial Recycling Rate:	14.9%	





CONTAINERS

all containers must be empty and clean of food residue

Glass Bottles & Jars



- ✓ Food and beverage glass only
- ✓ Remove lids, caps & corks
- ✓ Clean out any food residue
- ✗ NO glass vases or drinking glasses
- ✗ NO ceramics
- ✗ NO broken glass or mirrors

Metal Cans (Steel & Aluminum)



- ✓ Aerosol cans must be fully emptied
- ✓ Rinse out cans
- ✗ NO aluminum foil, pie pans or trays
- ✗ NO scrap metal
- ✗ NO stainless steel water bottles or thermoses

Plastic Bottles, Jugs, Jars & Tubs



- ✓ Remove lids and caps
- ✗ NO plastic bags, wrap, cups or tubes
- ✗ NO Styrofoam® materials
- ✗ NO plastic clamshells, egg cartons or deli containers
- ✗ NO plastic utensils
- ✗ NO microwavable trays

Cartons (Tetra Pak & Gable-top)



- ✓ Food and beverage cartons only
- ✓ Rinse out cartons with soap and water
- ✓ Remove plastic caps
- ✗ NO pouches or straws
- ✗ NO take-out containers



PAPERS

remove all plastic bags and plastic wrap

Cardboard Boxes



- ✓ Flatten boxes into pieces no larger than 4 ft. by 4 ft.
- ✓ Remove any plastic film and Styrofoam® packing materials
- ✗ NO boxes with food residue, such as greasy pizza boxes

Paperboard



- ✓ Remove plastic film from pasta and tissue boxes
- ✓ Paper egg cartons are okay
- ✗ NO bakery or donut boxes
- ✗ NO paper plates or cups

Newspapers, Magazines & Phone Books



- ✓ Remove plastic bags and plastic wrap
- ✓ Remove and discard magnets from phone books
- ✓ Paperback books and manuals are okay to recycle
- ✗ NO papers with foil or glitter

Office Paper, Junk Mail & Paper Bags



- ✓ Remove food and wrappings
- ✓ Plain wrapping paper is okay to recycle
- ✗ NO glossy type gift bags
- ✗ NO popcorn or pet food bags
- ✗ NO bubble envelopes

Not Accepted for Recycling



When items that are **not** accepted for recycling (contaminants) are placed in with recycling, it:

- Increases the cost of processing recyclables
- Damages expensive sorting equipment
- Lowers the quality of the recyclables, thus decreasing the market value of those materials

The recycling symbol on containers represents the general category of plastic that material is made from, but it does not mean the container is recyclable in your community.



Zero Waste Education



zerowastegn.com/recycle



@zerowastegn



cityofgainesville.org/recycle

Multi-Family Property Recycling

- **City of Gainesville Mandatory Commercial Recycling Ordinance:**

All commercially-collected residential properties of five or more units shall establish a recycling program that includes recycling of all designated recyclable materials and is convenient and accessible to the residents (Chapter 27, Article III, Division 3, Sections 27-85 & 85-85).

- **Designated Commercial Recyclable Materials**

PAPERS

- Corrugated Cardboard & Pasteboard
- Newspaper, Magazines, Catalogs, Manuals, Paper Bags, Phone Books, & Paperback Books
- Office Paper (including shredded paper) & Junk Mail

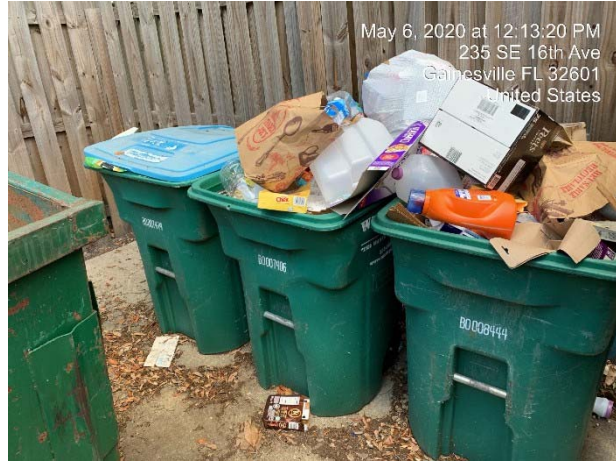
CONTAINERS

- Metal Cans (steel and aluminum)
- Glass Bottles & Jars
- Plastic Bottles, Jugs, Jars & Tubs

Poorly labeled recycling containers



Overflowing recycling containers



Quality recycling stations



Sad recycling station



Our Goals

Successfully keeping contaminants out of the recycling stream at Multi-Family Properties requires a partnership between the recycling service provider, property management, and tenants.

- Increase Diversion (recycling, composting, reuse, source reduction)
- Make sure properties have an adequate level of recycling collection services (based on the number of units at a property)
- Ensure the proper and easily identifiable labeling is on recycle containers (large-sized “Recycle Here” decals and list of Accepted/Non-Accepted Items)
- Standardization of recycle containers (uniformity across the city)
- Education (clear and engaging messaging)
- Reuse (collection events during December and May move-outs)

What Actions Can You Take?

Stakeholder input is critical. Stakeholders can drive which policies and programs will be successful in a community.

- ✓ **Raise awareness** (talk to friends & neighbors, ask questions, post what actions your taking)
- ✓ **Contact your elected officials** (individually and as a group) – phone calls & letters
- ✓ **Hold us accountable** (local, state & federal government)
- ✓ **Demand more** from your property owner and/or property management team (tenant petitions for more recycling)



Information on upcoming Zero Waste Subcommittee Meetings
online at <https://zerowastegnv.com/news-events/>

Tom Strickland
Recycling Coordinator
City of Gainesville, Solid Waste Division
352-393-8452
stricklantl@cityofgainesville.org